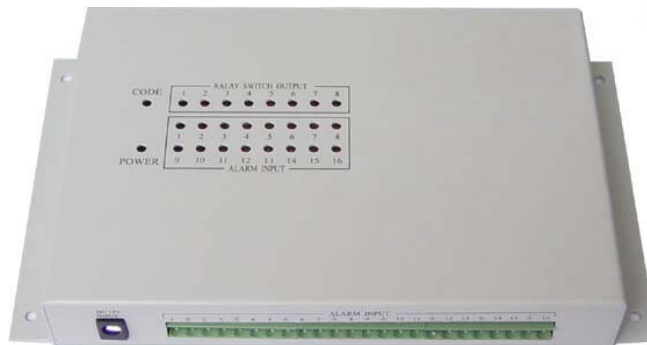


# 3xLOGIC

## Tech Tip 090019

### VGL-DV7616 DIO Setup Guide

<b>Tech Tip Number:</b>	090019
<b>Date:</b>	July 2, 2009
<b>Product Affected:</b>	Vigil Server connecting to VGL-DV7616
<b>Purpose:</b>	This bulletin provides instructions on how to set up a VGL-DV7616 DIO Device using Vigil Server.



#### Table of Contents

<b>1</b>	<b>VIGIL SERVER SETUP DETAILS .....</b>	<b>2</b>
<b>2</b>	<b>VGL-DV7616 WIRING DIAGRAM .....</b>	<b>3</b>
	<b>VGL-DV7616 COM SETTINGS .....</b>	<b>3</b>
	<b>WIRING DIAGRAM .....</b>	<b>3</b>
	<b>ALARM WIRING – 2.2K RESISTANCE REQUIRED.....</b>	<b>4</b>
	<b>RELAY DETAILS .....</b>	<b>4</b>
	<b>SETTING THE ALARM BOX ID .....</b>	<b>5</b>
	<b>PROTOCOL SETTING .....</b>	<b>5</b>
	<b>LED LIGHTS .....</b>	<b>5</b>
<b>3</b>	<b>CONTACT INFORMATION .....</b>	<b>6</b>

# 1 Vigil Server Setup Details

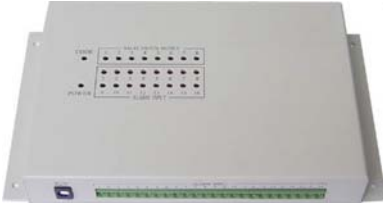
Note: Vigil Versions 5.00.0437 and later support VGL-DV7616DIO devices.

1. In **Vigil Server**, Click the **Settings** button in the toolbar to open the *Settings* window
2. Select the **DVR Settings** tab and then select the **Hardware** sub tab  
Note: If there are any DIO devices listed which do not exist then please delete them before adding the VGL-DV7616 DIO device.
3. Click the **AUX Device Settings** button and click **Add**
4. In the **Type** dropdown, select **DCtrls 7616**
5. In the **COM Port** section, enter the COM Port to which the VGL-DV7616 DIO device is attached
6. In the **Address** section, select the address (Alarm Box ID) of the VGL-DV7616 DIO device  
Note: Refer to the VGL-DV7616 Wiring Details section below to determine the VGL-DV7616 DIO Device Address. The default address is 0.
7. Click **OK** in the Edit DIO Device window
8. Click **OK** in the DVR Settings window

If you have any questions or if you would like assistance with any of these steps, please contact 3xLogic Technical Support at 1-877-3XLOGIC

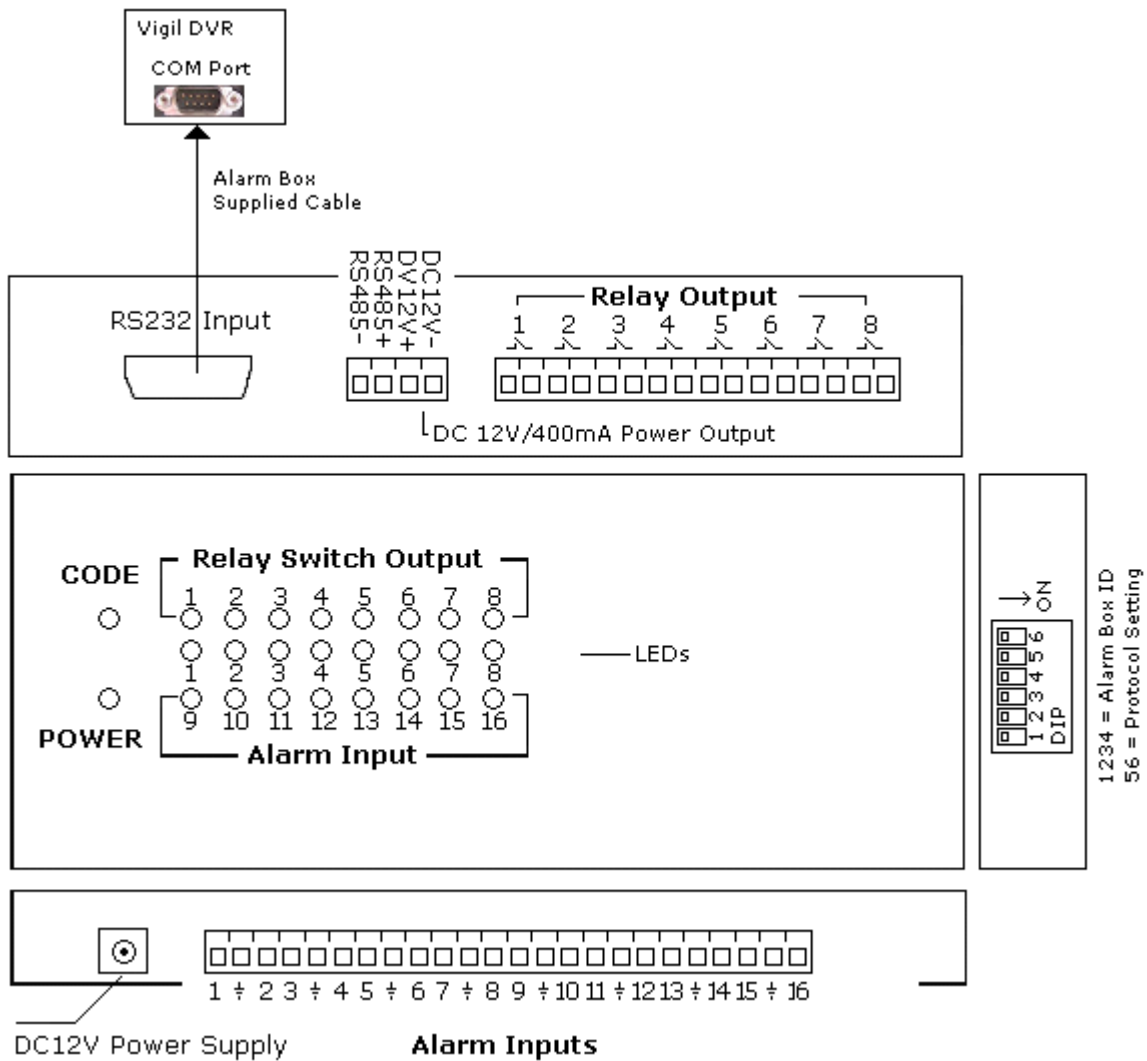
## 2 VGL-DV7616 Wiring Diagram

### VGL-DV7616 COM Settings

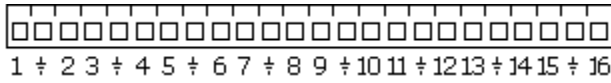


Baud rate: 9600  
 Data bits: 8  
 Stop bits: 1  
 Parity: None

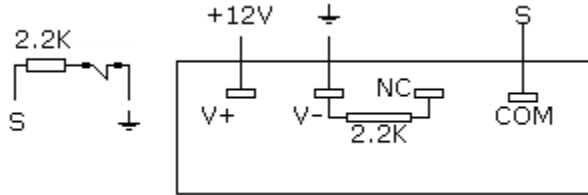
### Wiring Diagram



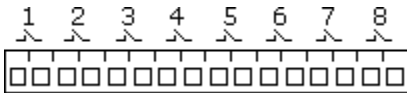
### Alarm Wiring – 2.2K resistance required



When connecting alarm wiring to the VGL-DV7616, always connect a 2.2K resistance in a series connection at the NO contact:



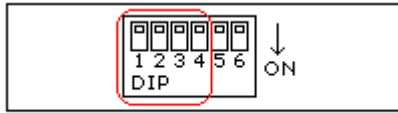
### Relay Details



8 normally open relays, AC220V/2A

## Setting the Alarm Box ID

The Alarm Box ID is set using the DIP switches on the side of the unit. The ID is a 4 digit binary number; see below for the binary switch settings for each ID number.



1234 = Alarm Box ID

ID #	DIP Switch #			
	1	2	3	4
0	OFF	OFF	OFF	OFF
1	ON	OFF	OFF	OFF
2	OFF	ON	OFF	OFF
3	ON	ON	OFF	OFF
4	OFF	OFF	ON	OFF
5	ON	OFF	ON	OFF
6	OFF	ON	ON	OFF
7	ON	ON	ON	OFF
8	OFF	OFF	OFF	ON
9	ON	OFF	OFF	ON
10	OFF	ON	OFF	ON
11	ON	ON	OFF	ON
12	OFF	OFF	ON	ON
13	ON	OFF	ON	ON
14	OFF	ON	ON	ON
15	ON	ON	ON	ON

Sample DIP Switch Settings for ID1:



## Protocol Setting

For Vigil Server to connect to the device, DIP Switch 5 and 6 must be set to OFF.

## LED Lights

**Code LED** – Blinks when the correct protocol is in use

**Relay Output LEDs** - On when Relay Closed, Off when Relay Open

**Alarm Input LEDs** – Long blink during alarm setup status, blinks when arming

### **3 Contact Information**

If you require more information, or if you have any questions or concerns, please contact  
3xLogic Technical Support:

Toll Free (North America): 1-877-3XLOGIC (1-877-395-6442)

Email: [support@3xlogic.com](mailto:support@3xlogic.com)

Online: [www.3xlogic.com](http://www.3xlogic.com)

